



April 2007

# Current Status

- ✓ **Listed on ASX on 27 November 2007 with stock code: **TEX****
- ✓ **50 million shares issued at 20 cents – A\$10 million raised**
- ✓ **68 million shares currently on issue**
- ✓ **Recent “Loyalty Options” raised \$340,000 – issued 34,000,000 25c options**
- ✓ **Recent price is 23 cents – Market Cap of \$13.2 million**
- ✓ **Cash position at 31/3 was approx A\$6.8 million**
- ✓ **Fully funded drilling campaigns underway in both Texas and Louisiana**

# Our Objectives

- ☑ **Create an ASX listed company with the potential for a \$50 million market cap within 2 years**

**Target Energy listed on 27 November 2006**

- ☑ **Explore in active, prospective areas with successful operators**

**Focus on onshore USA - Texas and Louisiana - reputable operators, good track records**

- ☑ **Assemble a solid, balanced portfolio with quality prospects**

**Eight wells - from 1.3 Bcf to around 300Bcf - all mapped on 3D, close to production and infrastructure**

- ☑ **Active drilling program**

**Three wells already drilled, 5 more to be drilled by August**

- ☑ **Early production and positive cash-flow**

**2 discoveries in first three wells**

# Methodology

- ✓ **Target identified proven, productive areas in USA with substantial infrastructure**
- ✓ **In those areas, Target then selected proven, experienced operators with good track record**
- ✓ **From Operator's prospect inventories, Target then selected best prospects - all mapped on 3D seismic**
- ✓ **Substantial infrastructure will fast-track production to delivery early cash flow**
- ✓ **Potential 100% reserves: 4.2 million barrels oil, 341 billion cubic feet gas equivalent**

# Target Energy Board and Management

## Didier Murcia, B.Juris, LLB – Chairman (Non Executive)

- Senior Partner of Murcia Pestell Hillard, leading Perth legal firm.
- Honorary Consul for the United Republic of Tanzania in Western Australia
- Director of Aminex PLC, a company listed on the London Stock Exchange
- Director of Gryphon Minerals Limited and Gindalbie Metals Limited, both listed on the ASX.

## Laurence Roe, B.Sc – Managing Director

- Petroleum explorationist - over 25 years experience in Australian and international projects.
- Former Exploration Manager, Magellan Petroleum Australia
- Former Managing Director and Exploration Manager of Bounty Oil & Gas.
- Exploration Consultant – clients include Hardman Resources, Santos, Strike Oil, Icon, Norwest
- Experience encompasses Australia, USA, NZ, Africa, Canada, Indonesia, Belize and Argentina.

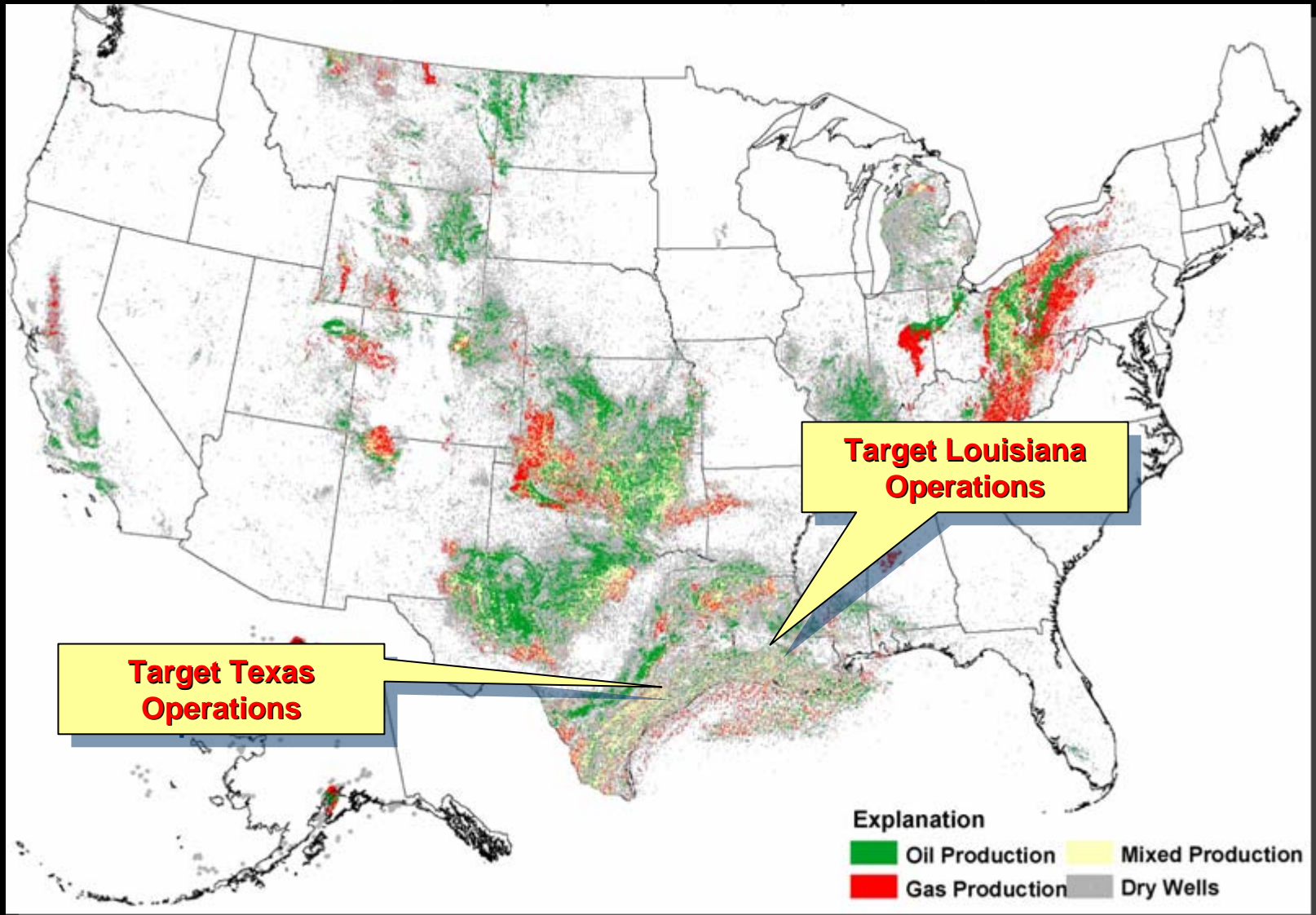
## Michael Martin, B.Sc (Hons) – Executive Director

- Petroleum exploration geologist – over 25 years experience
- co-founder of Flare Petroleum N.L.
- Former director of Canadian listed Chariot Resources Ltd and Franklin Resources Ltd
- Experience in Australia, Middle East, Western Mediterranean, North Sea, USA.

## Paul Lloyd, B.Bus CA – Non Executive Director, Company Secretary

- Chartered Accountant with over 20 years commercial experience
- Former General Manager of Finance at DrillCorp Ltd.
- Experienced public company director
- Extensive experience in the resource industry in Australia and Africa

# Drilling in active, prospective regions



# Current Drilling Schedule

Estimated Timing	Prospect	Location	Target Working Interest <sup>^</sup>	Potential Recoverable Reserves*
<i>Dec 06</i>	<i>Kant</i>	<i>Colorado Co, Texas</i>	<i>25%</i>	<i>P &amp; A (non-commercial shows)</i>
<i>Discovery - Mar 07</i>	<i>Thoroughbred</i>	<i>Colorado Co, Texas</i>	<i>25%</i>	<i>1.3 BCF</i>
<i>Discovery Apr 07</i>	<i>Snapper A1</i>	<i>St Martin Parish, La</i>	<i>25%</i>	<i>450 KBO; 4.2 BCF</i>
May 2007	Garwood	Colorado Co, Texas	25%	3 BCF
June 2007	Snapper A2	St Martin Parish, La	25%	1.49 MMBO; 0.9 BCF
July 2007	Bayou Berard	St Martin Parish, La	15%	1.8MMBO; 0.72 BCF
July 2007	Parks North	St Martin Parish, La	10%	150 KBO; <b>25.7 BCF</b>
Q3 2007	Berwyn	Assumption Parish, La	10%	<b>305 BCFe</b>

*\*Figures are operators unrisked estimates and represent total prospect or field potential – additional drilling may be required to fully recover reserves.*

*<sup>^</sup>Subject to finalisation of farm-in and/or unitisation agreements*

# Drilling Schedule

Dec-06	Jan-07	Feb	Mar	Apr	May	Jun	Jul	Aug	Sep	Oct	Nov	Dec
Kant												
			Snapper A1 (15/3)									
						Snapper A2	Parks North					
							Bayou Berard					Bayou Berard Updip (Contingent)
			Thorough bred									
	Heavy January rain in Texas delays drilling				Garwood							
								Berwyn				Berwyn Accel'n Well (Cntgnt) 2008?

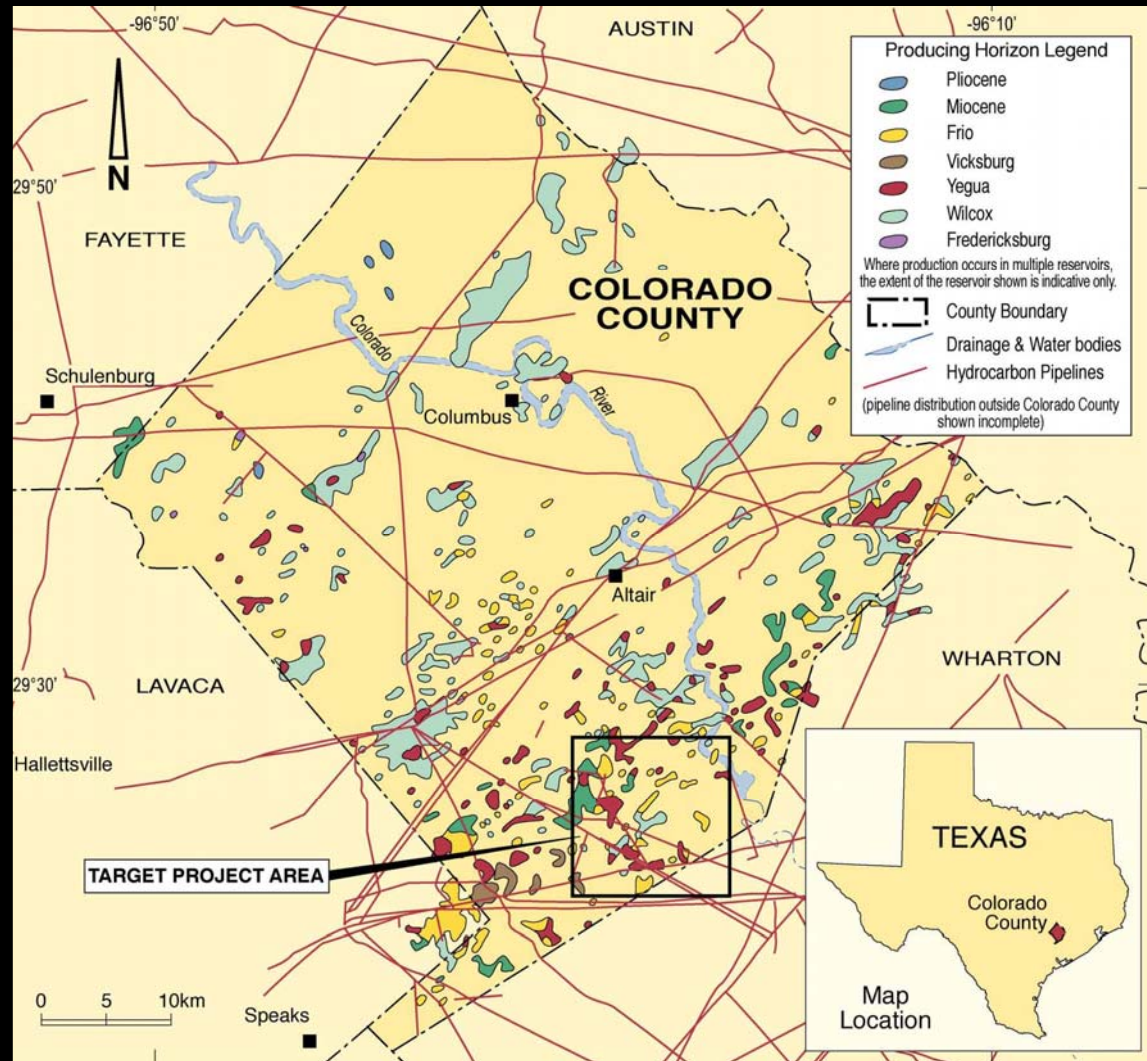
*\*Timetable is tentative and based on advice from operators. Actual program and spud dates may vary.*

# Low Risk Drilling Opportunities

## Everest Resource Company Shallow Gas - Onshore Texas

### Target Energy – 25% WI

- Oligocene Frio Sandstones
- <1,500 metres depth
- Can be identified on 3D seismic
- Low cost, low risk



# Low Risk Drilling Opportunities

Everest Resource Company  
Shallow Gas - Onshore Texas

Target Energy – 25% WI

## Kant-1

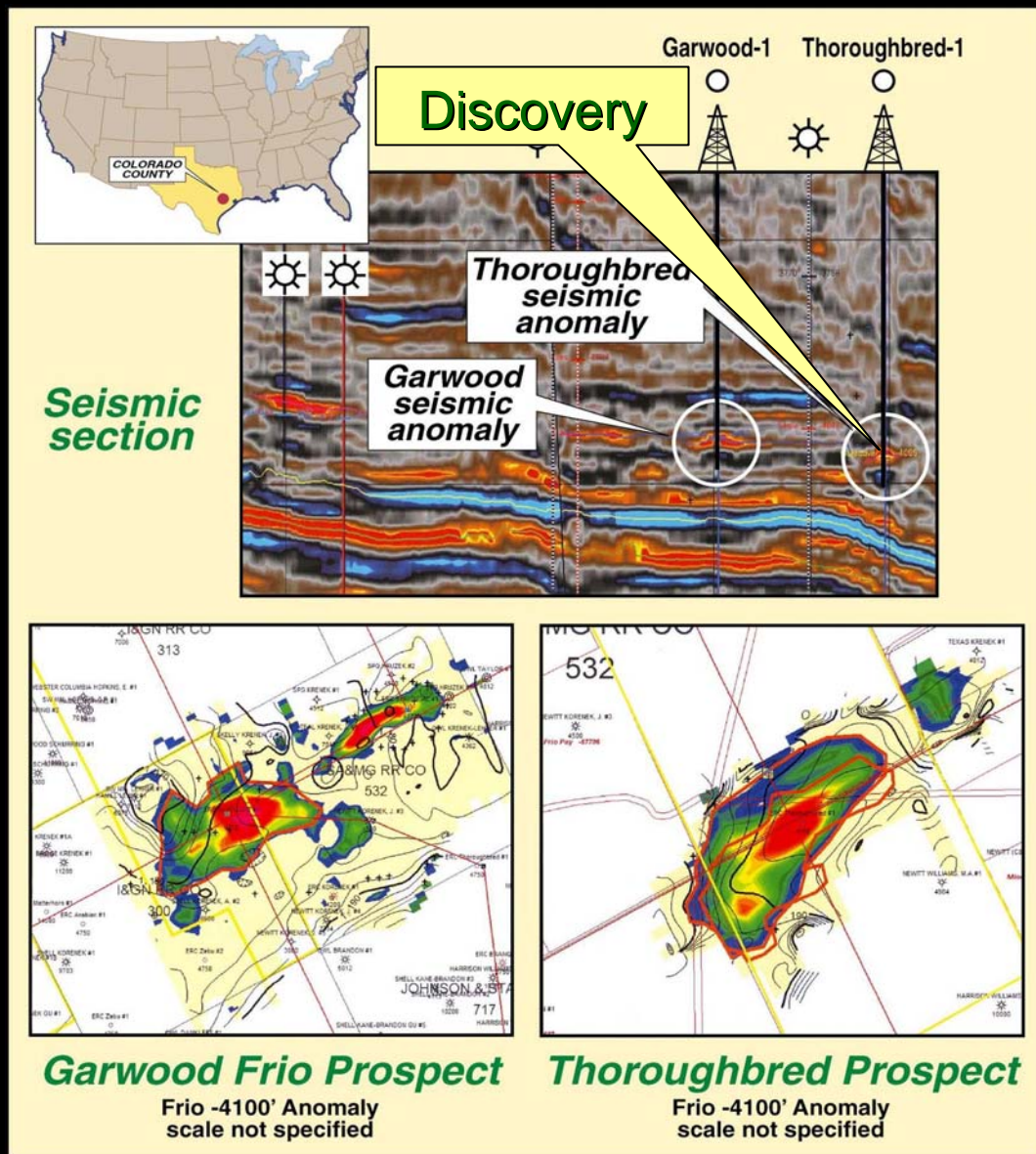
Drilled December 06 – P&A'd with sub-commercial gas shows

## Thoroughbred-1 (1.3 Bcf)

Drilled March 2007 – **discovery**. Gas pay on logs – completed as a gas well. Flow tested up to 450 mcfgd. Awaiting hook-up.

## Garwood Prospect (3 Bcf)

Due to spud in late April.



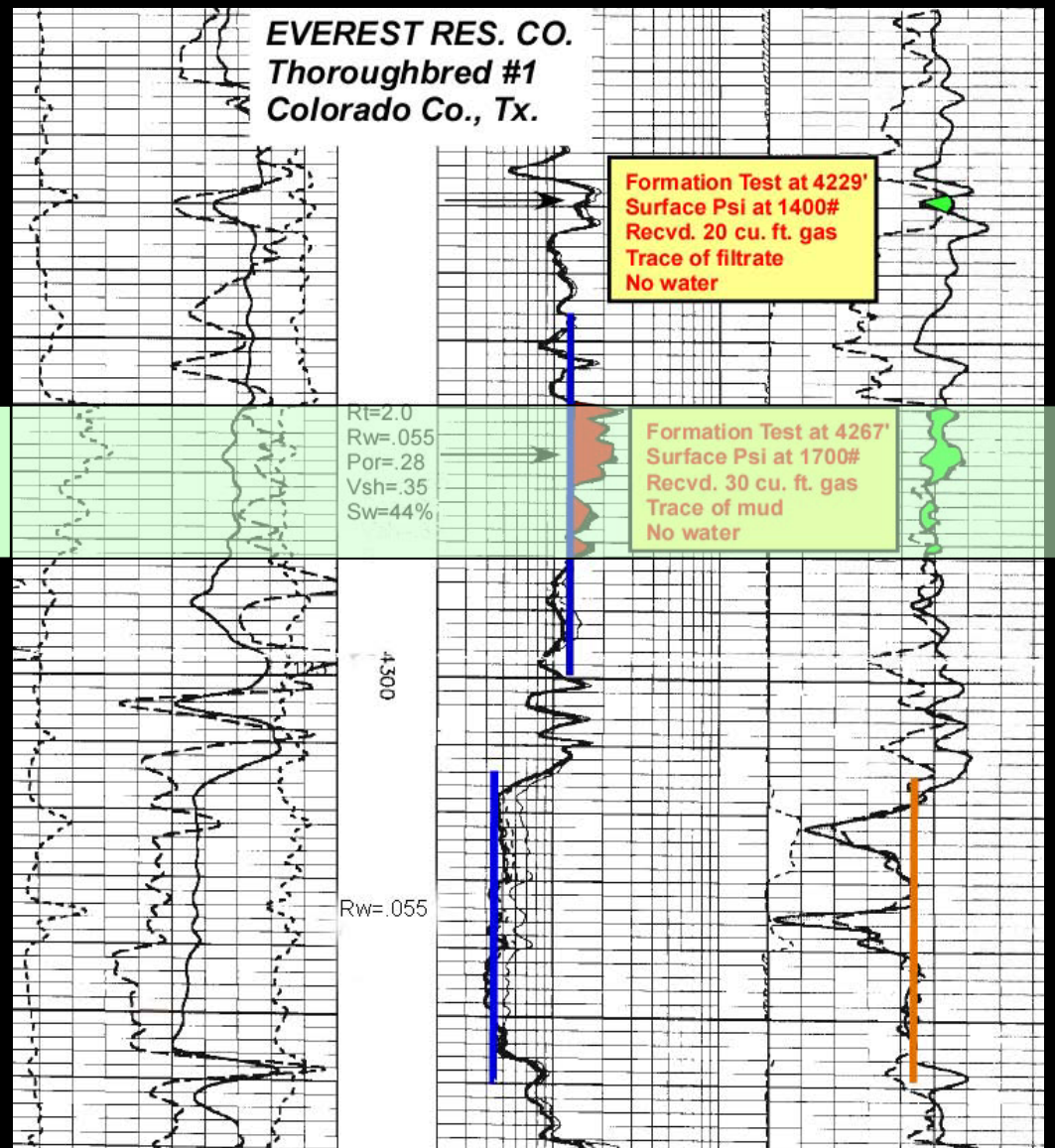
# Everest Resource Company

## Thoroughbred-1

### Target Energy – 25% WI

**Frio Sand**  
Por = 28%; Sw = 44%

- Well completed and successfully flow-tested to 450 mmcfd
- Awaiting hook-up to pipeline



# Everest Resource Company Onshore Texas



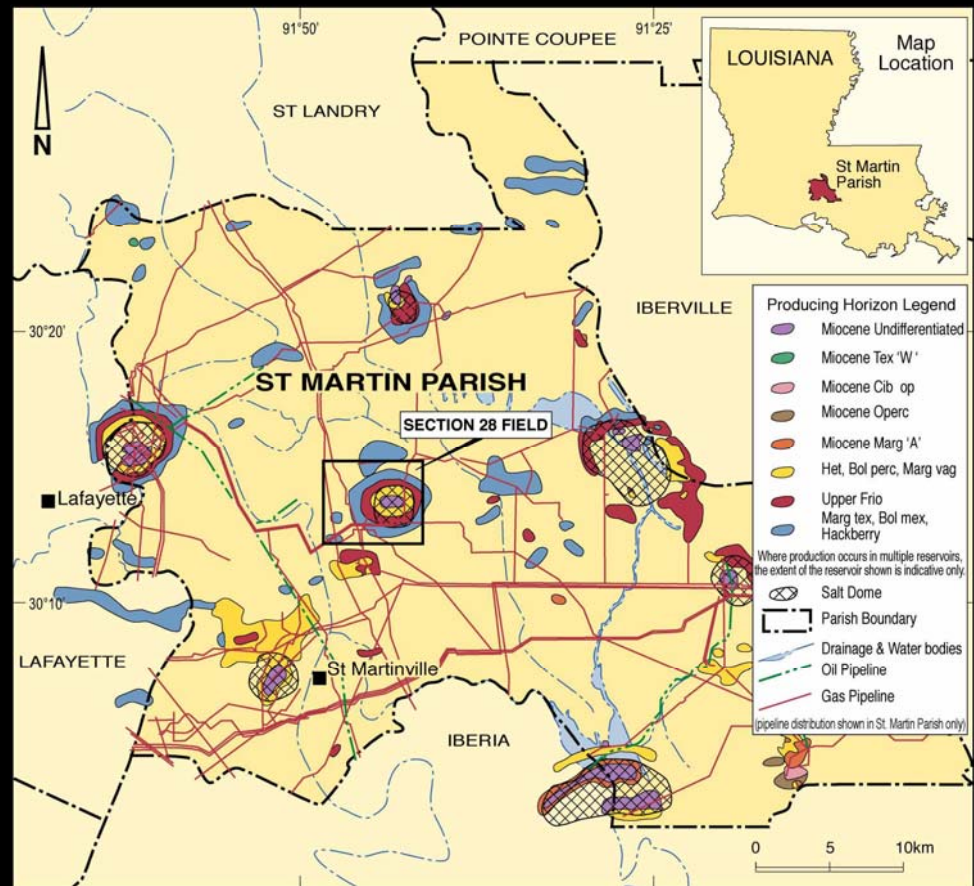
Everest Rig, Colorado County, Feb 07

## Low Risk Drilling Opportunity

Cypress Productions, LLC  
Gas and oil/cond onshore Louisiana

Target Energy 10 – 25% WI

- Section 28 Field - salt dome with 3D seismic coverage.
- Cypress have drilled 11 wells at this field - 8 oil producers and 3 dry holes.
- 4 wells scheduled – drilling underway at first well, Snapper A-1 - **discovery**
- Wells can be onstream in 2 to 4 months after completion



**Snapper #A-1 0.337 mmBO + 3.8 Bcf gas**

**Snapper #A-2 1.130 mmBO + 0.5 Bcf gas**

**Parks North 0.102 mmBO + 16.5 Bcf gas**

**Bayou Berard 0.900 mmBO + 0.4 Bcf gas**

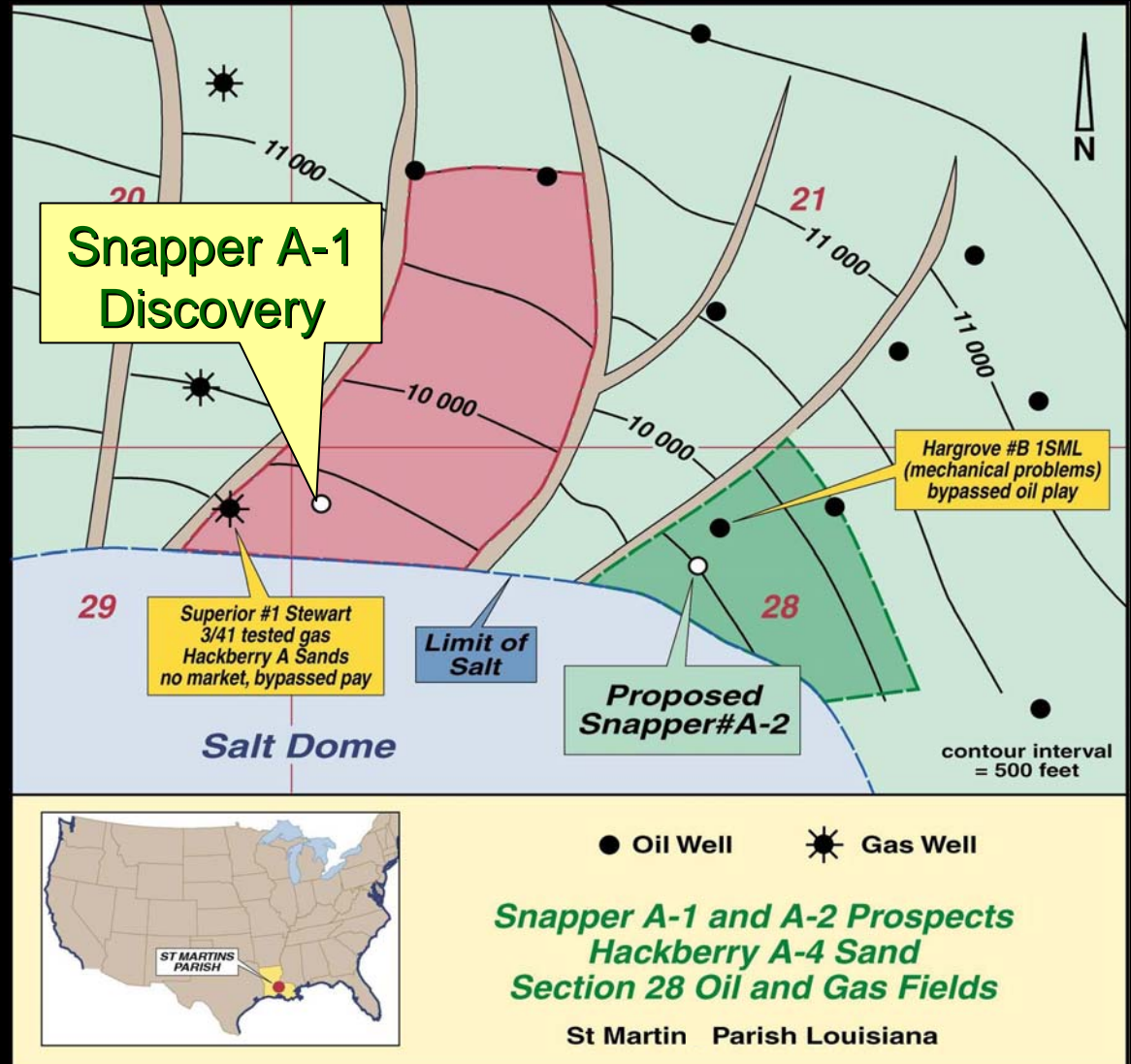
**Total 2.469 MMBO + 21.2 Bcf (risked)**

Cypress Productions, LLC  
Gas and oil/cond onshore La

Target Energy - 25% WI

**Snapper A-1**  
0.337 MMBO  
3.8 BCF gas

**Snapper A-2**  
1.13 MMBO  
0.5 BCF gas

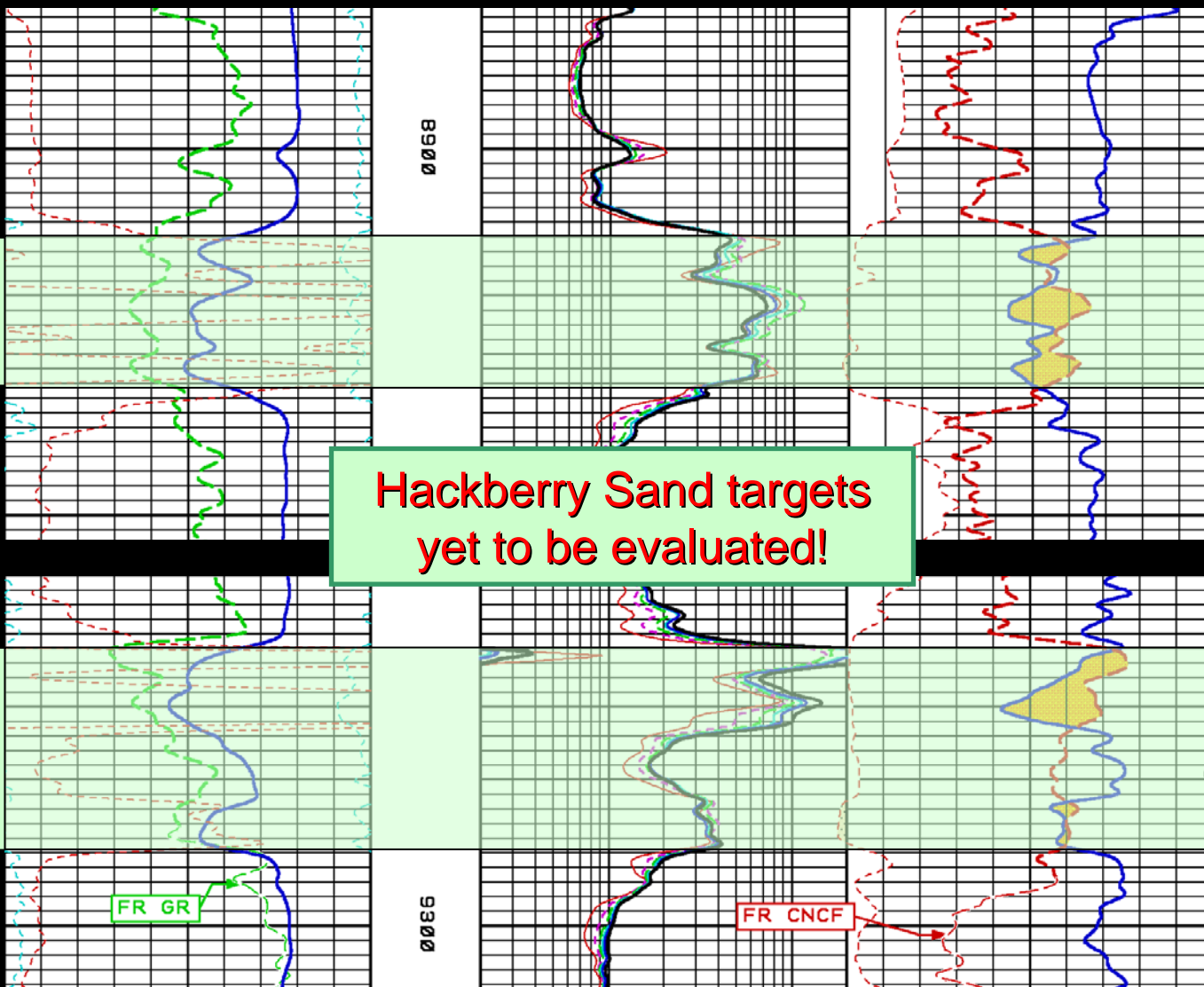


# Snapper A-1 Discovery

**Marg Howei Sand**  
14 feet net pay  
Por = 27%; Sw = 21%

**Hackberry Sand targets  
yet to be evaluated!**

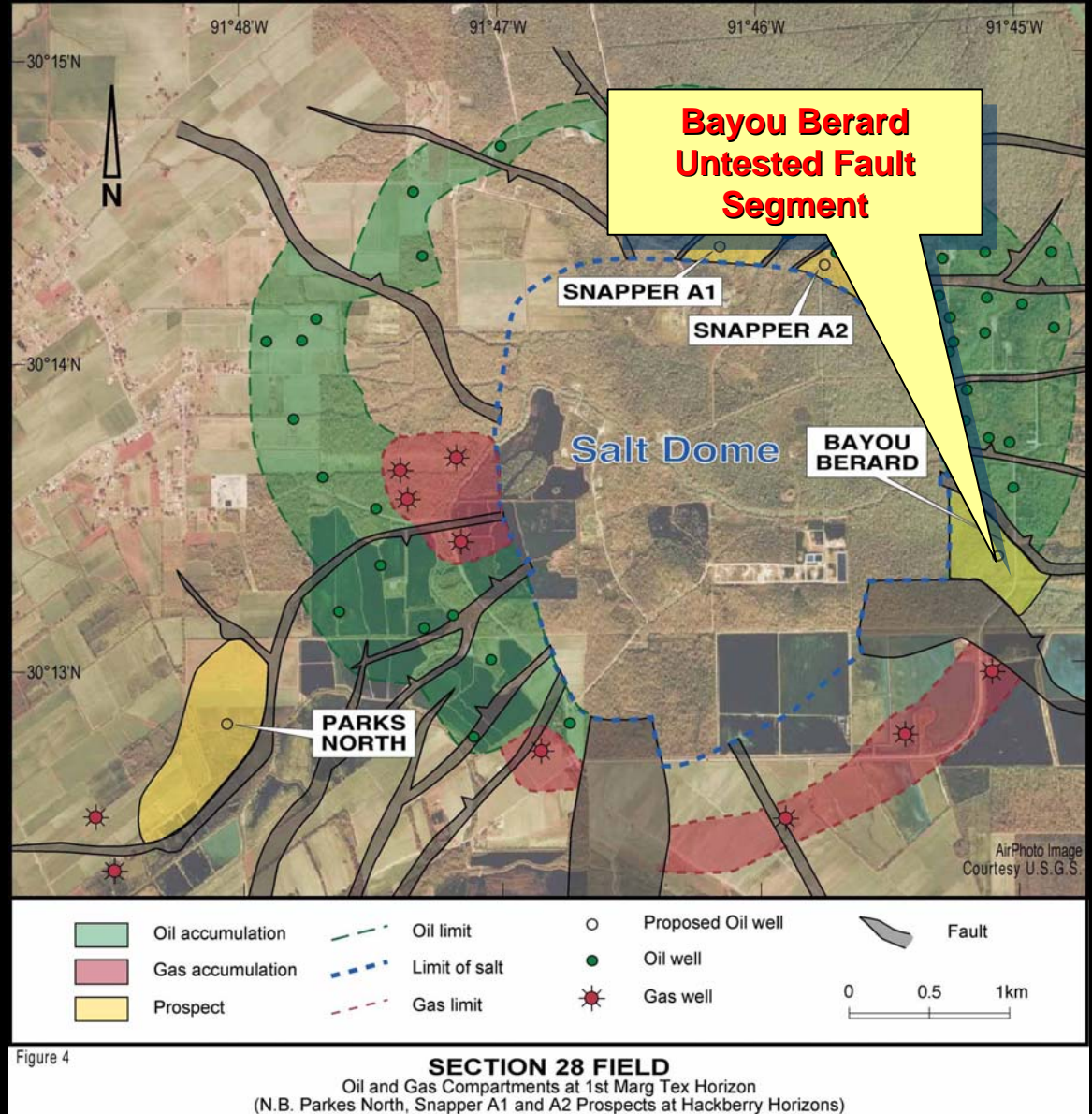
**3<sup>rd</sup> Marg Tex Sand**  
17 feet net pay  
Por = 24%; Sw = 35%

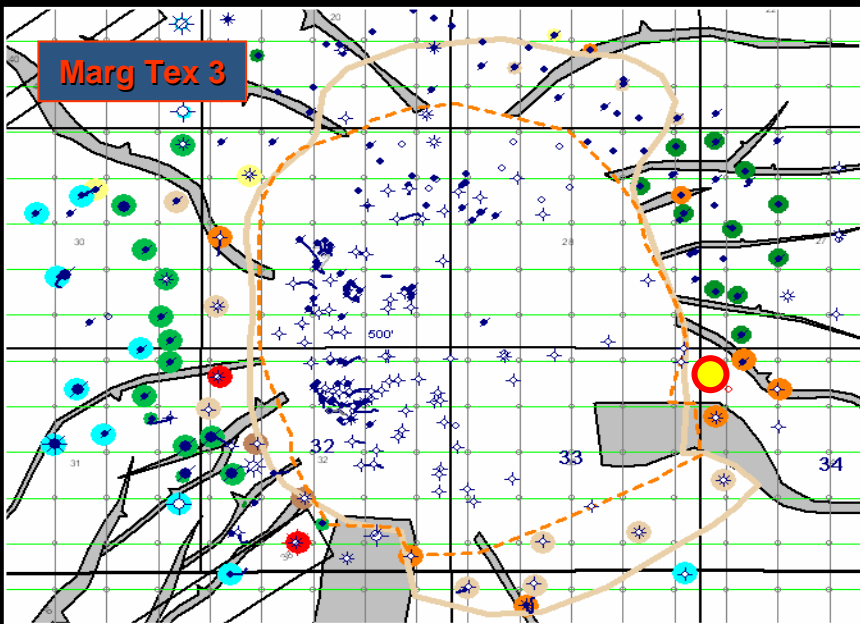
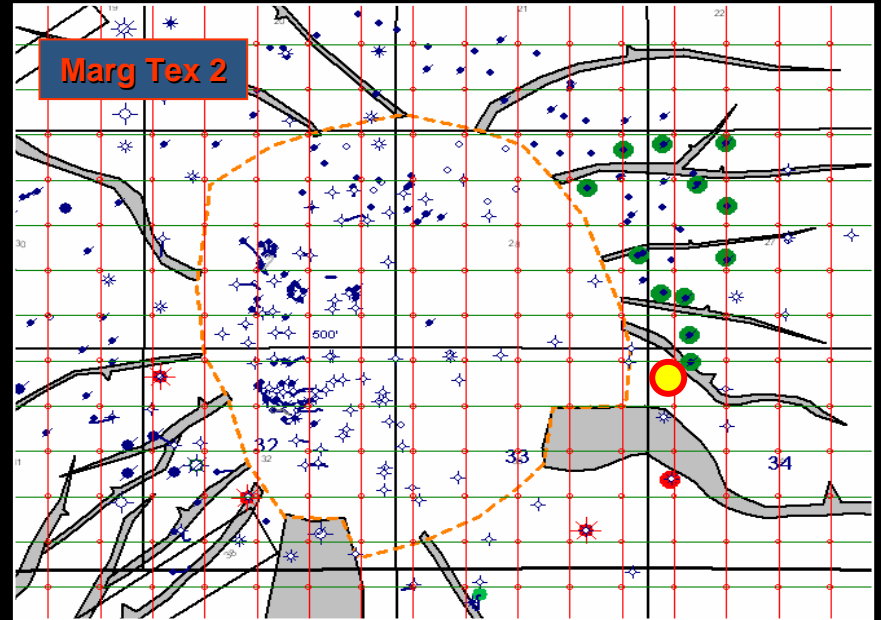
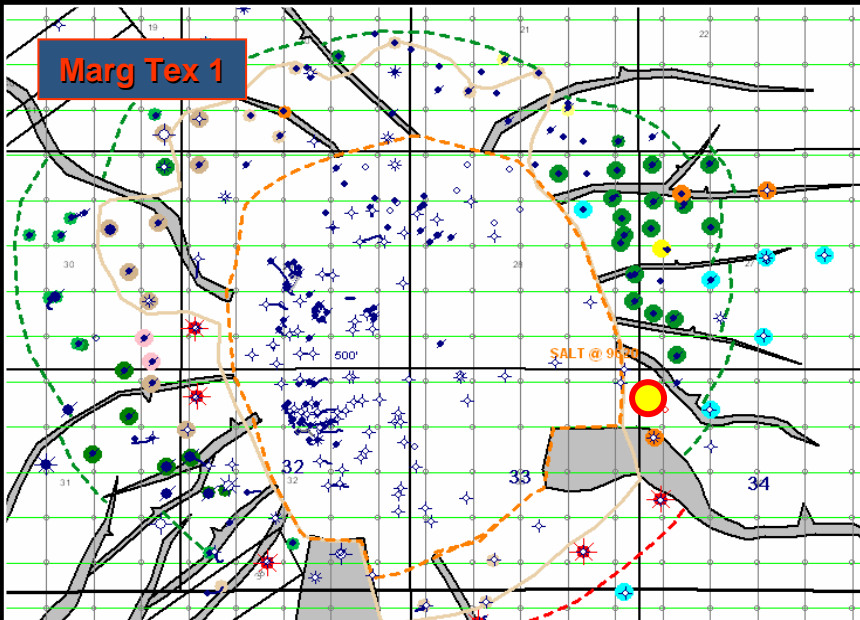


Cypress Productions, LLC  
Gas and oil/cond onshore La


Target Energy - 15% WI

Bayou Berard  
0.9 MMBO  
0.4 Bcf gas





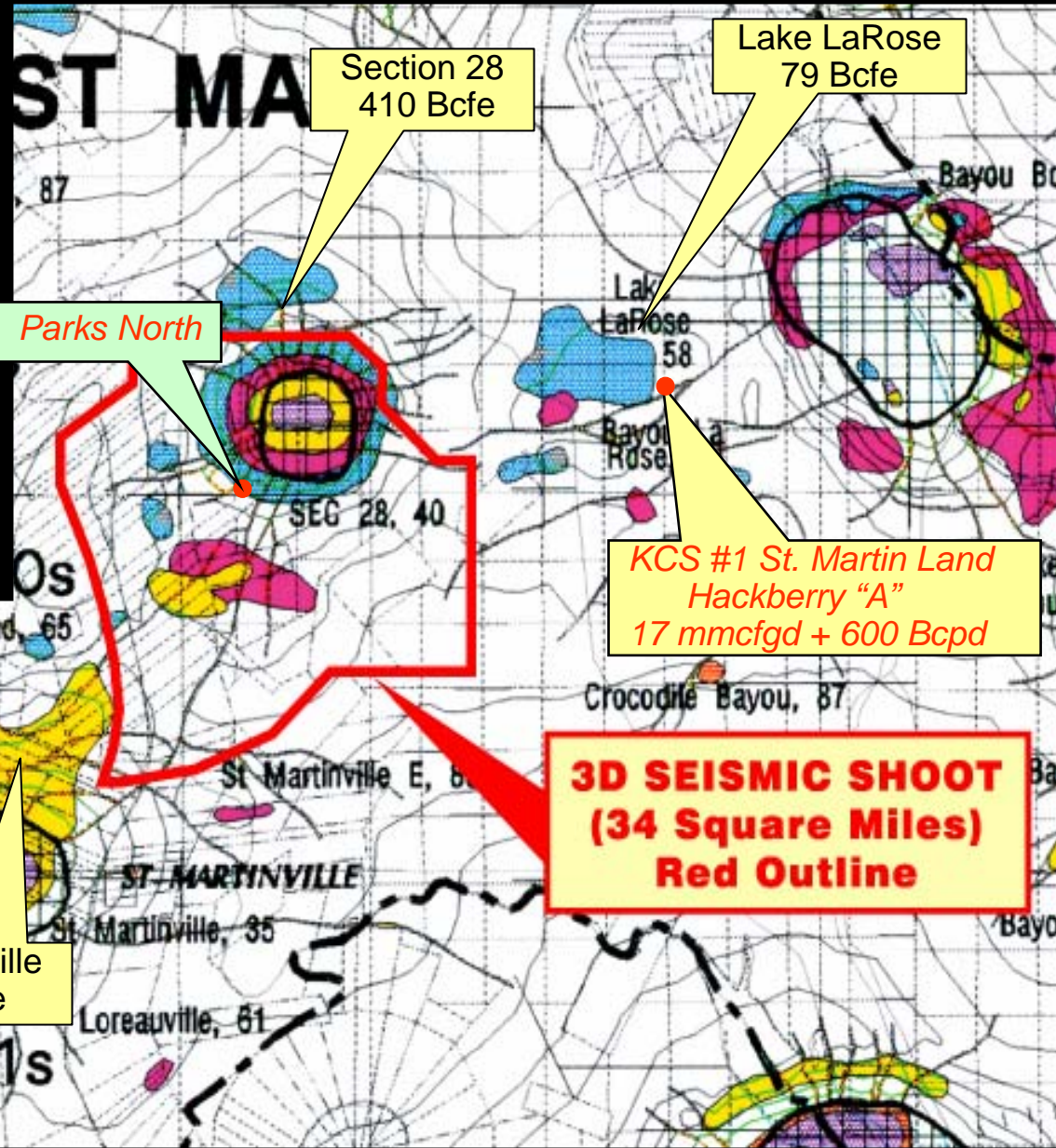
### Well Color Key

- Light green: Oil by core or test.
- Dark green: Proven producer oil
- Pink: Gas by core or test
- Red: Proven producer gas
- Yellow: High resistivity on log, probable hydrocarbons
- Light Brown: Shaled out
- Dark Brown: Tight
- Orange: Faulted out
- Blue: Wet by log, core or test
-  Bayou Berard Prospect

Cypress Productions, LLC  
Gas and oil/cond onshore La

Target Energy - 10% WI

**Parks North**  
**0.102 MMBO**  
**16.5 Bcf gas**





## "Company-maker" Prospect

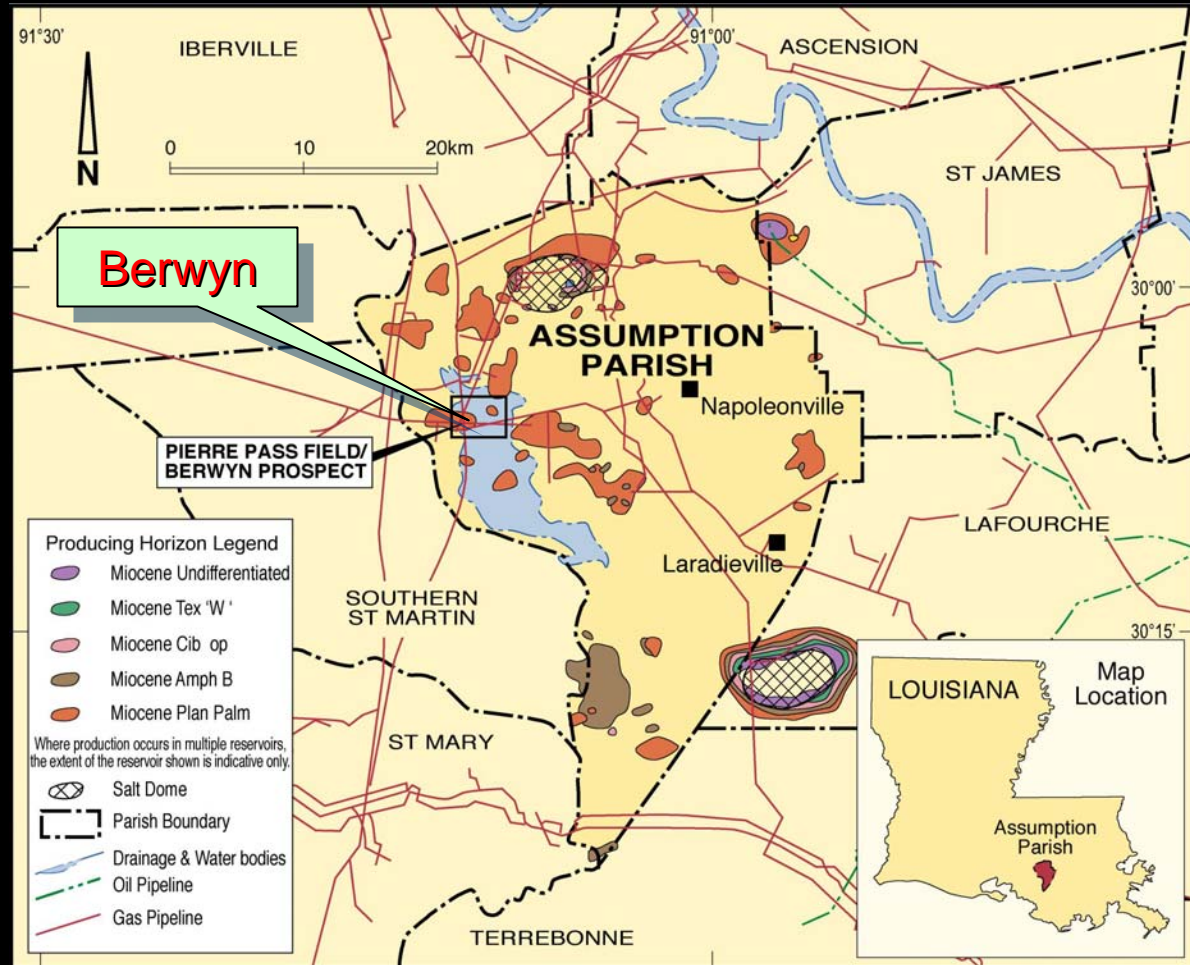
Pogo Producing Company  
Gas/Cond - Inland waters, La  
Target Energy - 10% WI

15,800 ft (4,815m) well,  
targeting up to 305 Bcfe rec  
gas.

Well is a deeper pool test of  
existing 68 Bcf field (Pierre  
Pass).

Identified as part of major  
regional review of over 500  
sq mi of 3D.

Discovery can be brought  
onstream around 60 days  
from completion.



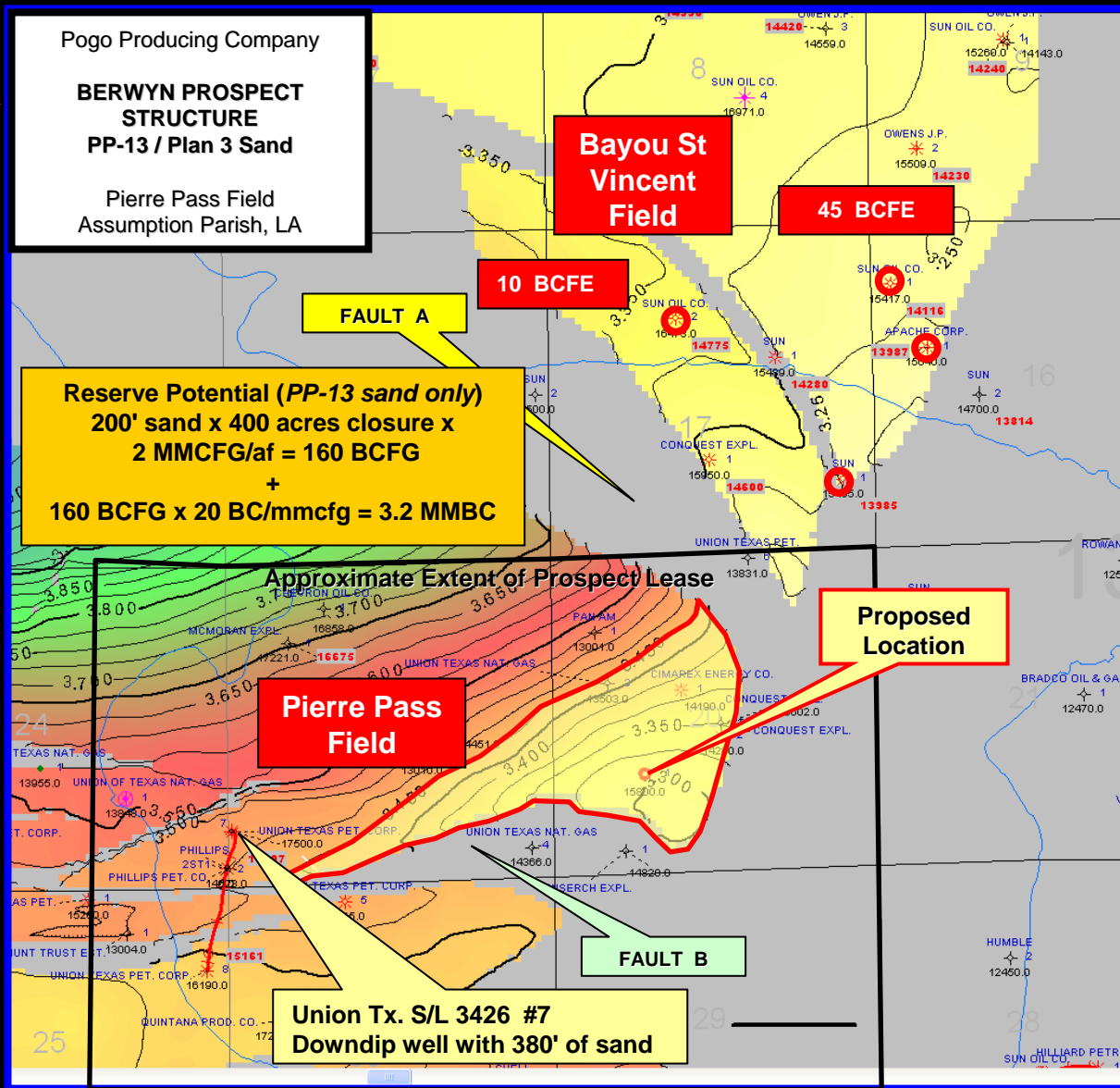
*The Operator, Pogo Producing Company, is a US\$2.7 billion company. It explores for, develops and produces oil and natural gas. Pogo owns approximately 4,800,000 gross leasehold acres in major oil and gas provinces in North America, with interests in New Zealand and in Vietnam. Pogo is listed on the NYSE ("PPP").*

# Pogo Producing Company Gas/Cond - Inland waters, La

## Target Energy - 10% WI

Proposed location on the Pierre Pass structure, updip to thick sands seen in the UT S/L 3426 #7.

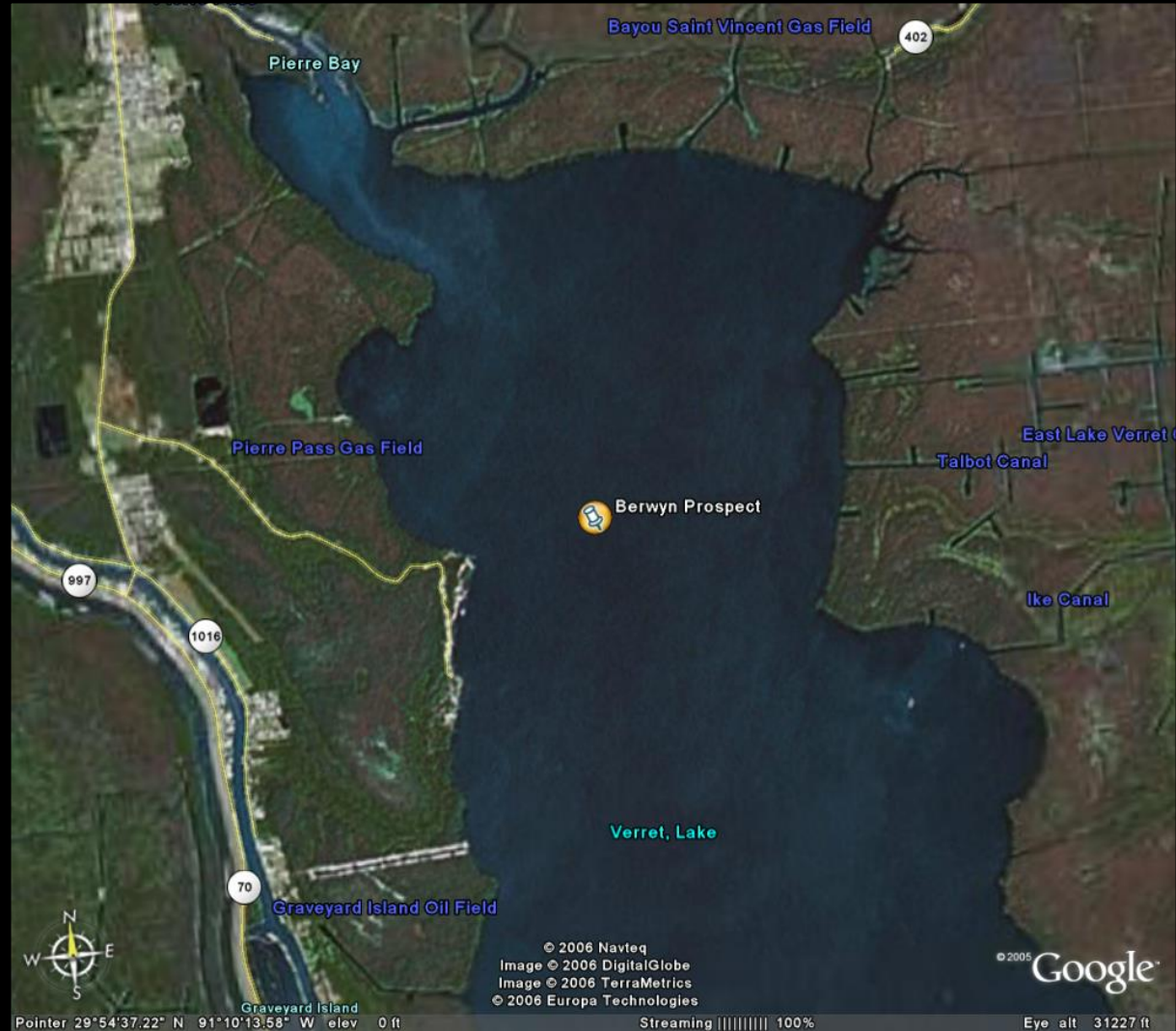
PP-13 objective sand has produced 55 Bcfe at Bayou St. Vincent Field, to the north. All objective sands (PP-13 through PP-20) produced 115 Bcfe at Bayou St. Vincent.



Pogo Producing Company  
Gas/Cond - Inland waters, La  
Target Energy - 10% WI

Proposed location on  
the Pierre Pass  
structure.

Local fields and  
infrastructure evident.



## Target Energy's current activities

- Monitoring progress of existing projects.
- Developing next phase of exploration (Q4 07 through 2008).
- Reviewing numerous prospects.

Well Number	Region	State	Objective	Control	No wells	Depth ft	Time
07.001	California	Ca	Monterey Shale	Subsurface	1	6,500	
07.002	California	Ca	Blewett Sand	2D	5	5,500	
07.003	California	Ca	Stevens	3D	3	9,000	
07.004	GOM	La	Abbeville/Cris R	3D	1	14,500	Q2 07
07.005	GOM	Tx	Frio Wilcox	3D	1	15,000	Q2 07
07.006	GOM	Tx	Frio Wilcox	3D	2	7200,14000	
07.007	GOM	Tx	Miocene?	3D	2	11,750	
07.008	GOM	Tx	Miocene?	3D	1	6,500	
07.009	GOM	Tx	Miocene?	3D	1	11,000	
07.010	GOM	Tx	Mid Miocene Big hum	3D	1	10,500	
07.011	GOM	Tx	Lentic/Mid Mioc	3D	1	7,000	
07.012	GOM	Tx	Pliocene	3D	1	11,500	Q2 07
07.013	GOM	La	Cib Carst	3D	1	16,500	Now
07.014	GOM	La		3D	2	11,200	Asap
07.015	GOM	La	Textularia X	3D	1	9,000	
07.016	Rockies	Wy	Minnelusa	3D	1	6,400	
07.017	Rockies	Wy	Dakota Channels	3D	1	5,100	
07.018	Rockies	Mt	Upper Miss Sun River	Subsurface	1	9,000	
07.019	Rockies	Co	Lewis, Mesa Verde	Subsurface	2	7,100	
07.020	Rockies	Wy	Dakota Channels	Subsurface			
07.021	MidContinent	Mi	Ordovician Prairie du Chien	2D			Q2 07
07.022	Gulf Coast	La	Marg A; Rob L	3D	1	9,120	
07.023	Gulf Coast	Tx	Hackberry, Vicksburg Yegua		?	14,500	
07.024	Gulf Coast	La	Big Hum N and P Sands	3D	1	12,100	
07.025	Gulf Coast	La	Planulina P2, P6, P8	3D	1	15,350	
07.026	Gulf Coast	La	Alliance (Mulvey - Cib Jeff)	3D	1		Q1 07
07.027	Gulf Coast	La	Alliance (Mulvey - Cib Jeff)	3D	1	17,000	Q1 07
07.028	Gulf Coast	La	Tuscaloosa Fm				
07.029	Gulf Coast	Tx	L1 Sands	3D	1	17,500	Q2 07
07.030	Gulf Coast	Tx			1		Q2 07
07.031	Gulf Coast	Tx	Wilcox		1		Q3 07
07.032	Gulf Coast	Tx	Wilcox		1		Q4 07
07.033	Gulf Coast	Tx	Upr Landa to Sweeney 6	3D	1	10,500	
07.034	Gulf Coast	Tx	Marks, Sweeney	3D	1	13,500	
07.035	Gulf Coast	Tx	Upper Wilcox	3D	1	15,500	
07.036	Gulf Coast	Tx	Upper Wilcox	3D	1	14,200	
07.037	Gulf Coast	Tx	Upper Wilcox	3D	1	17,000	
07.038	Gulf Coast	La	Krumbhar, KK	3D	1	14,000	
07.039	Gulf Coast	La	Marg Tex	3D	1		
07.040	Gulf Coast	La	Camerina Sand	3D	1	13,200	
07.041	Gulf Coast	La		3D	1	2,600	
07.042	Gulf Coast	Tx	Wilcox	3D	1	13,100	
07.043	Gulf Coast	La	Lower Cris	2D	1	10,700	Q4 07
07.044	Gulf Coast	La	SD, Planulina sands	3D	1	15,100	Q2 07
07.045	Gulf Coast	Tx	Travis Peak (Hosston)		1	11,500	
07.046	Gulf Coast	La	Alliance, Mulvey HET-2	3D	1	12,300	Q2 07
07.047	Gulf Coast	Tx	Edwards	2D			
07.048	Gulf Coast	Tx		3D	1	12,000	
07.049	Gulf Coast	La	Seismic	3D			
07.050	Gulf Coast	Tx	Yegua	3D		10,500	
07.051	Gulf Coast	La	Planulina, Marg Vag	3D		17,700	
07.052	Gulf Coast	La	Planulina; D Sands	3D		16,750	
07.053	GOM	Tx	Miocene Rob C	3D		7,700	
07.054	GOM	Tx	Miocene	3D		8,000	
07.055	GOM	Tx	Miocene Rob L	3D		9,480	
07.056	Gulf Coast	Tx	Frio Bright Spot	3D		6,250	
07.057	Gulf Coast	Tx	Yegua	3D		12,700	
07.058	Gulf Coast	Tx	Wilcox	2D			
07.059	GOM	Tx		3D		1,000	
07.060	Gulf Coast	La		3D		11,700	Q3 07
07.061	Gulf Coast	La		3D		10,360	Q2 07
07.062	Gulf Coast	La		3D		10,000	Q2 07
07.063	Gulf Coast	La		3D		11,850	Q2 07



## Delivering to Shareholders

- ✓ Fully funded drilling campaigns underway in both Texas and Louisiana
- ✓ 3 wells drilled within five months of listing
- ✓ 2 out of the 3 wells are to be completed as producers
- ✓ Discoveries to be generating cash-flow within months
- ✓ 5 more wells planned to be drilled in next two quarters
- ✓ Remaining wells to test an aggregate 335 Bcfe + 3.72 mmBO
- ✓ Company actively pursuing new opportunities

target  
TARGET ENERGY LIMITED

